

Windows XP

- Use *FET-Pro430 lite* to flash Mecrisp into MSP430 LaunchPad.
- Use a Terminal like *TeraTerm* to operate Mecrisp.
- Use *Notepad+* to write source code.

NOTE: Source code must have CRLF as end of line.
Convert to CRLF before you use code that has been written in
Linux - they use LF which does not work with Tera Term

See how it is done

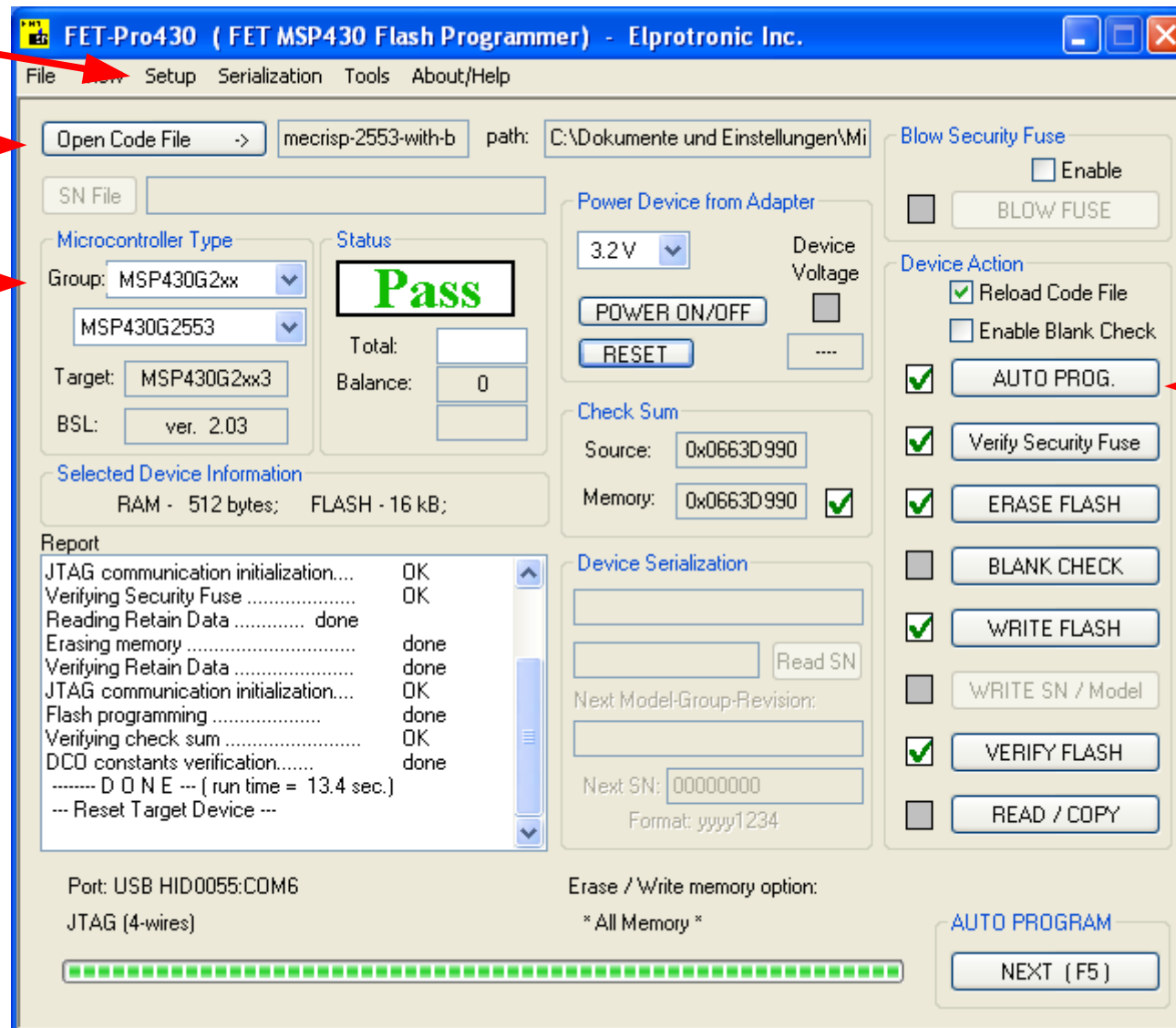


Use FET-Pro430 lite to flash Mecrisp into MSP430 LaunchPad.

2. Setup Connection

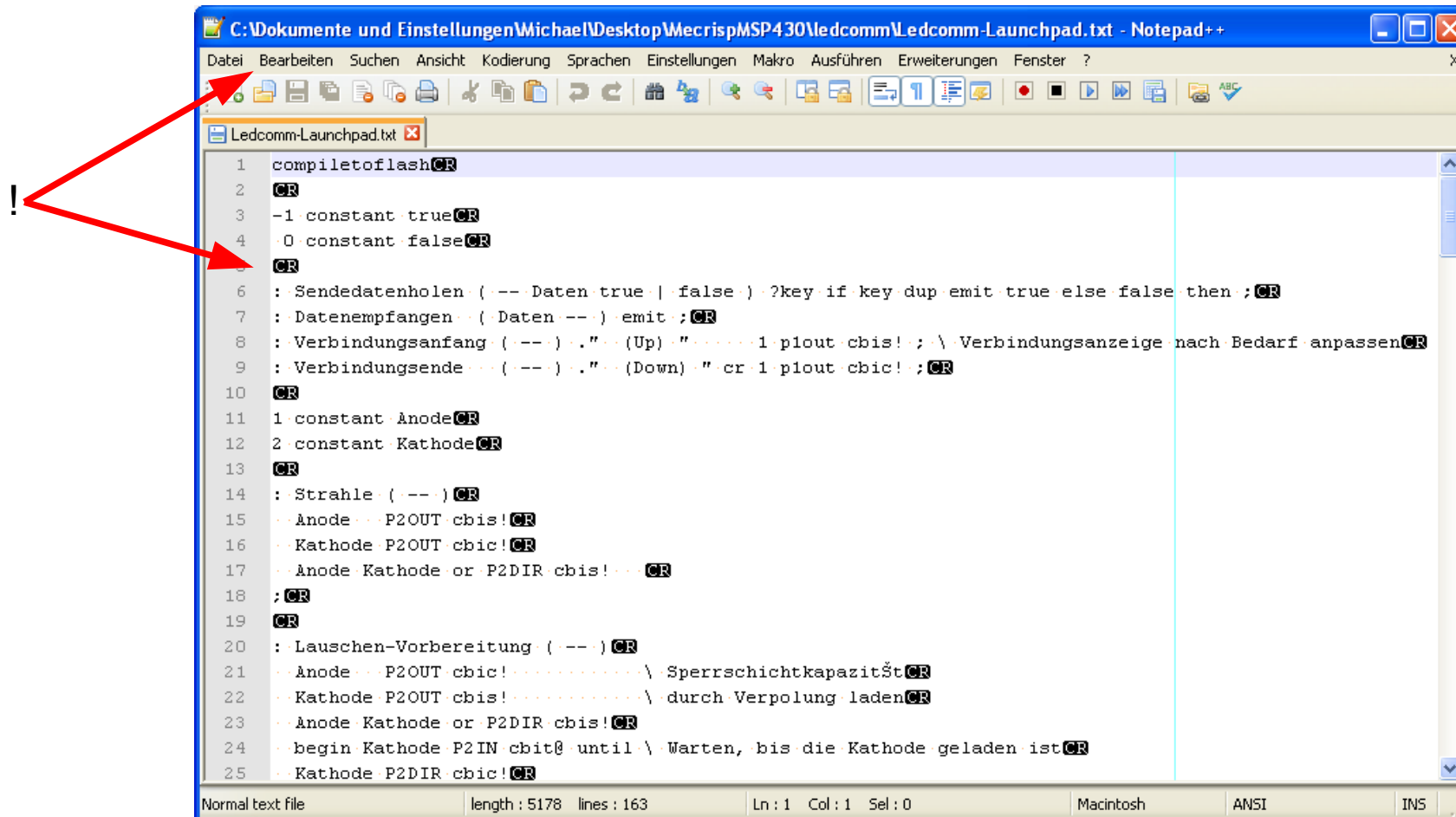
3. do this

1. Select LaunchPad



4. flash it

Use Notepad+ to convert source code
so that CR is end of line - never mind its
Mac, it works with Tera Term and
Mecrisp).

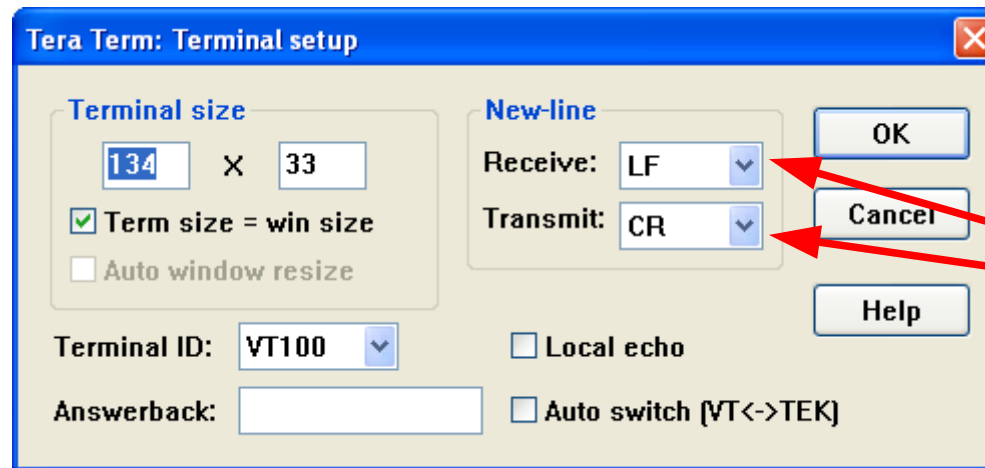


The screenshot shows a Notepad++ window titled "C:\Dokumente und Einstellungen\Michael\Desktop\Mecrisp\MSP430\ledcomm\Ledcomm-Launchpad.txt - Notepad++". The menu bar includes "Datei", "Bearbeiten", "Suchen", "Ansicht", "Kodierung", "Sprachen", "Einstellungen", "Makro", "Ausführen", "Erweiterungen", and "Fenster". The toolbar contains various icons for file operations and editing. The text area displays the following code:

```
1 compiletoflashCR
2 CR
3 -1:constant trueCR
4 0:constant falseCR
5 CR
6 :Sendedatenholen (--- Daten true | false) ?key if key dup emit true else false then ;CR
7 :Datenempfangen (---) emit ;CR
8 :Verbindungsanfang (---) . " (Up) " . 1 piout cbis! ; \Verbindungsanzeige nach Bedarf anpassenCR
9 :Verbindungsende (---) . " (Down) " . cr 1 piout cbic! ;CR
10 CR
11 1:constant AnodeCR
12 2:constant KathodeCR
13 CR
14 :Strahle (---) CR
15 ..Anode .. P2OUT cbis!CR
16 ..Kathode P2OUT cbic!CR
17 ..Anode Kathode or P2DIR cbis! .. CR
18 ;CR
19 CR
20 :Lauschen-Vorbereitung (---) CR
21 ..Anode .. P2OUT cbic! .. \SperrschichtkapazitätCR
22 ..Kathode P2OUT cbis! .. \durch Verpolung ladenCR
23 ..Anode Kathode or P2DIR cbis!CR
24 ..begin Kathode P2IN cbit0 until \Warten, bis die Kathode geladen istCR
25 ..Kathode P2DIR cbic!CR
```

Two red arrows originate from an exclamation mark (!) on the left. One arrow points to the "CR" at the end of line 1, and the other points to the "CR" at the end of line 4. The status bar at the bottom indicates "Normal text file", "length: 5178 lines: 163", "Ln: 1 Col: 1 Sel: 0", "Macintosh", "ANSI", and "INS".

Setup Tera Term to download source code.



Note

New-line (receive)

CR

Tera Term doesn't convert it.

CR+LF

Received CR (\$0D) characters are converted to CR+LF (\$0D \$0A) pairs.

e.g.) If "CR LF" is received, it is converted to "CR LF LF."

LF

Received LF (\$0A) characters are converted to CR+LF (\$0D \$0A) pairs.

e.g.) If "CR LF" is received, it is converted to "CR CR LF."

New-line (transmit)

CR

Tera Term doesn't convert it.

CR+LF

CR (\$0D) characters to be sent are converted to CR+LF (\$0D \$0A) pairs before they are actually sent.

Copy&Past source code into Tera Term to download it.

Ctrl-A
Ctrl-C

Mouse
click
right

